



Keltech® Tankless Heaters

Efficient. Precise. Fast.

Bradley's Keltech® electric tankless water heaters provide an on-demand supply of ANSI-required tepid water for safety showers and eye/face washes in seconds. SNA Series are the only electric tankless water heaters registered with the National Board and certified with the HLW stamp!

TOUGH ENOUGH

for the most extreme environments on earth



Safety. First and Last.

The safety of your employees is paramount. Keltech® electric tankless emergency water heaters are engineered to ensure that water temperature is just right – not too hot, not too cold. Under constant flow and pressure, temperatures stay within $\pm 1^{\circ}\text{F}$ ($\pm 0.5^{\circ}\text{C}$) of set point. If the flow rate changes drastically, there is no need to worry about being scalded. These units sense the transition and purge latent heat, keeping the output temperature below 90°F (32°C). A separate set of circuits monitors for “over temperature” conditions. Large internal passageways minimize pressure drop.

Efficient tempering solutions. Saves energy. Easy to install.

Perform on demand for efficient energy usage. Unlike boilers and tank systems, tankless water heaters only draw energy when needed. Utility costs are minimized because there is no need to keep a 300 gallon (1,136 l) tank heated 24/7/365. Easy to install – just add water and power. All you need is one electrical connection and a cold water line.

Premium quality. Long lasting optimal performance.

Premium features come standard. All models are precision-engineered with materials, such as copper piping and robust brass castings, that exceed the standards of any application – anywhere in the world.



CLE Series

for safety eye/face wash applications



SNA Series

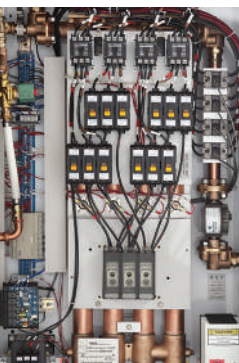
for safety shower applications



S19361 Series

heater and safety fixture skids

- Precision systems engineered to fit your application
- Meets ANSI Z358.1 tepid water requirements
- NEW TepidGuard™ discharge thermally protects the water inside the SNA units during stand-by and active use
- Brass/Copper heat exchangers meet NSF/ANSI 372
- ETL/cETL certified to UL and CSA standards
- SNA Series: units 63 kW and higher are the only electric tankless tempering systems in the world registered with the National Board and certified with the HLW stamp
- Optional features include NEMA 4X stainless steel enclosures, explosion proof purge system, and freeze protection to -20°F (-28°C)



For optimum safety performance, install Keltech Tankless Systems with Halo™ drench showers and eye/face washes.

See all models and technical information @ bradleycorp.com

+1 262 251 6000
800 BRADLEY bradleycorp.com
W142 N9101 Fountain Boulevard
Menomonee Falls, WI USA 53051
4076-0715

